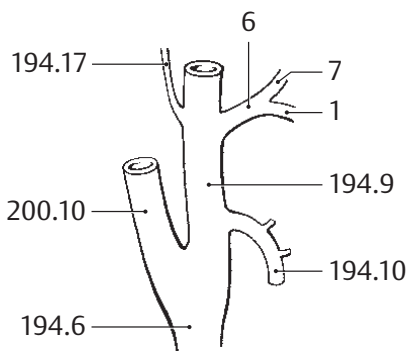
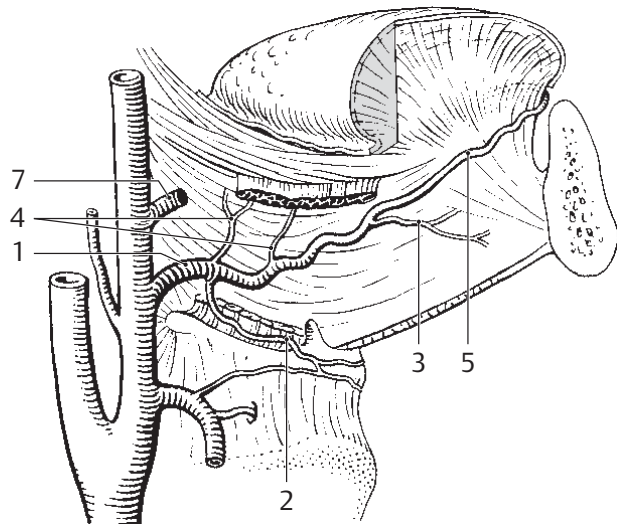


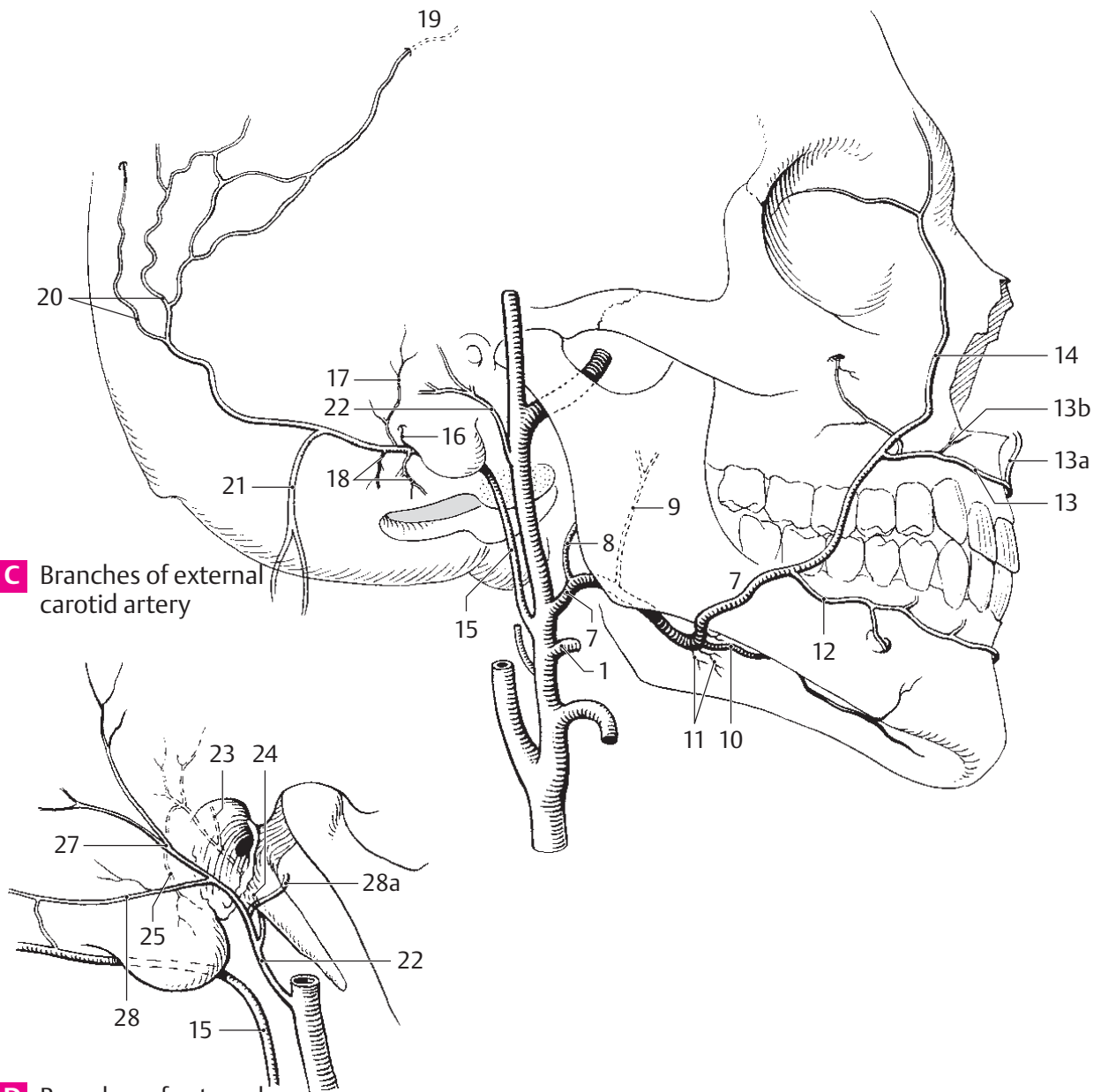
A Arch of aorta and vessels of neck



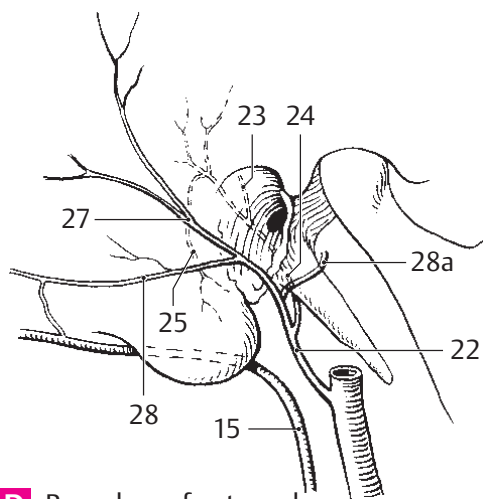
A Linguofacial trunk



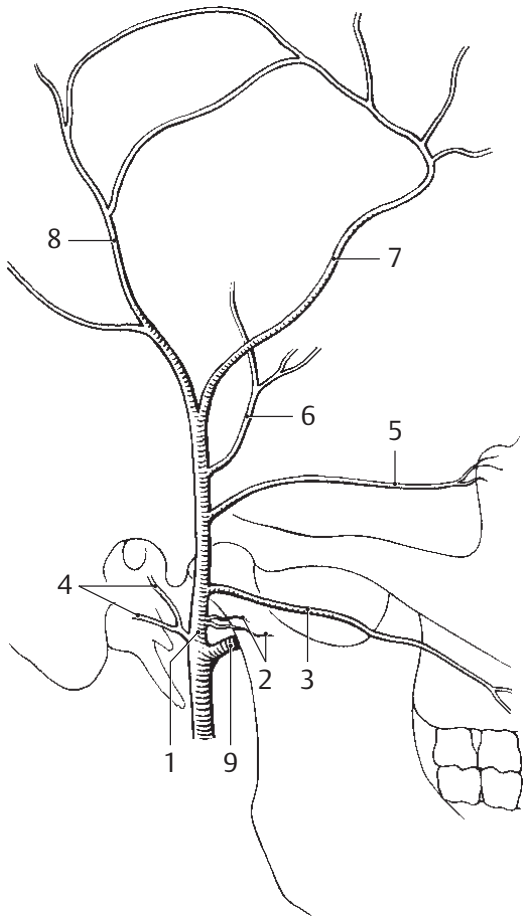
B Branches of external carotid artery



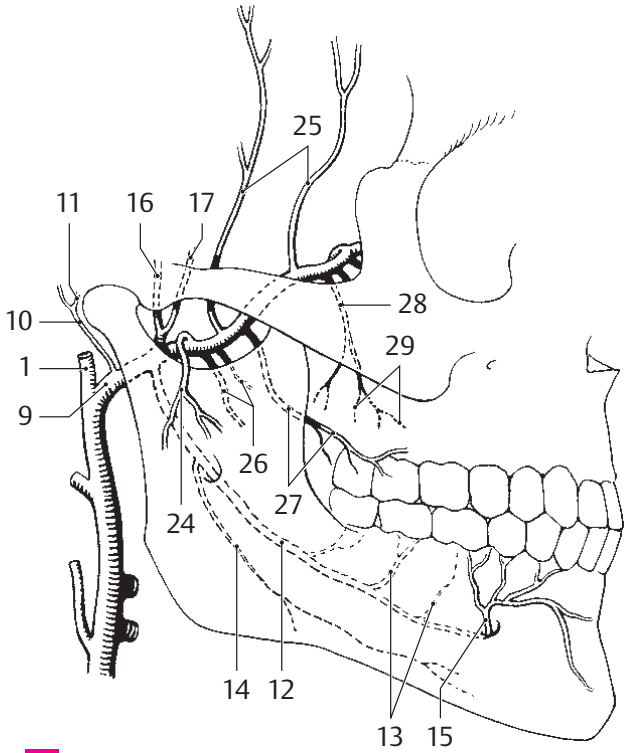
C Branches of external carotid artery



D Branches of external carotid artery

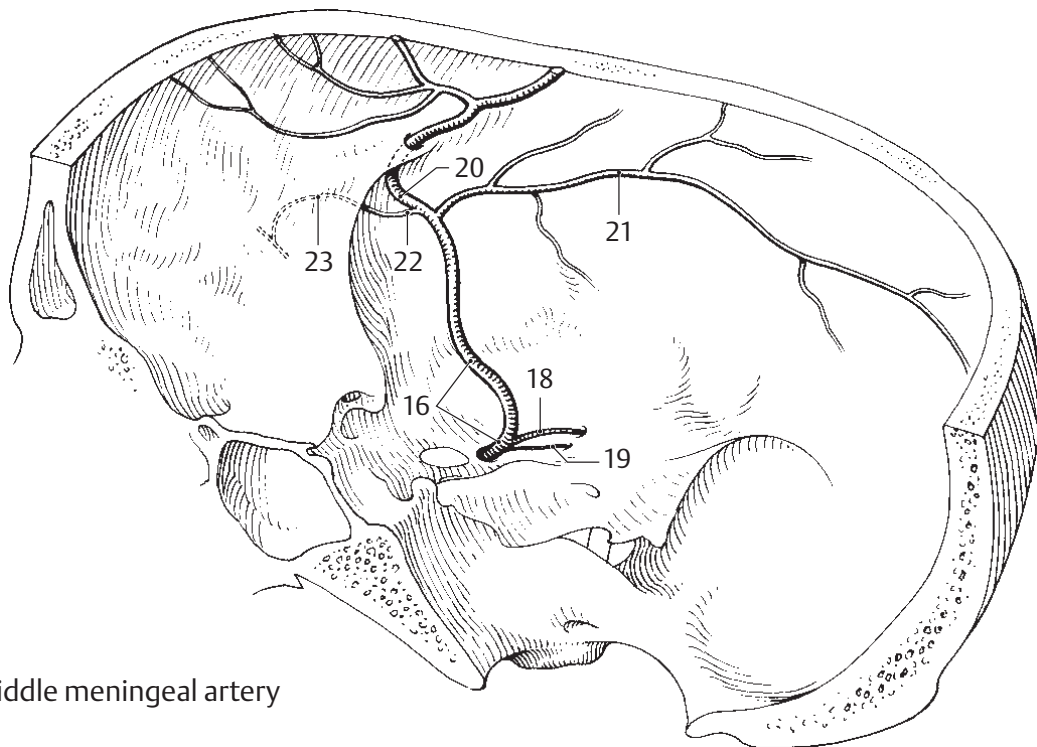


A Superficial temporal artery

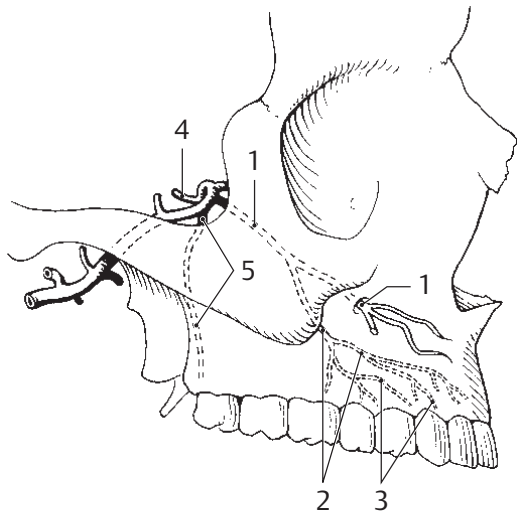


B Maxillary artery

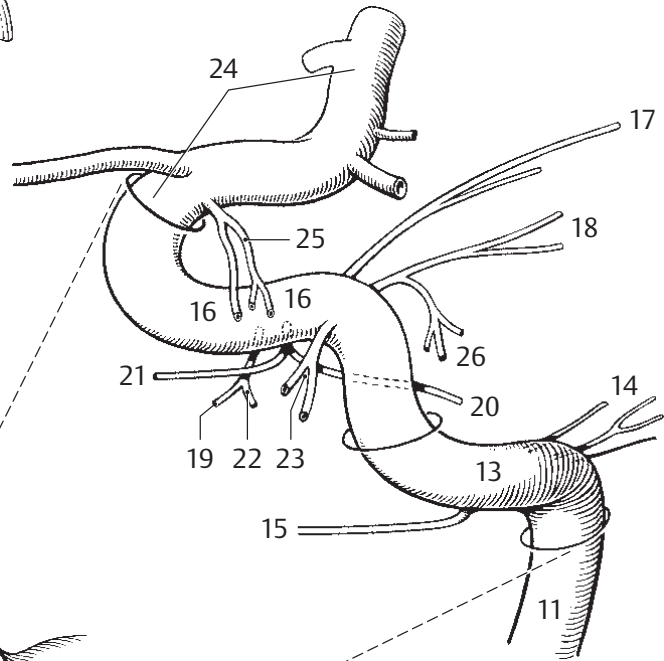
11



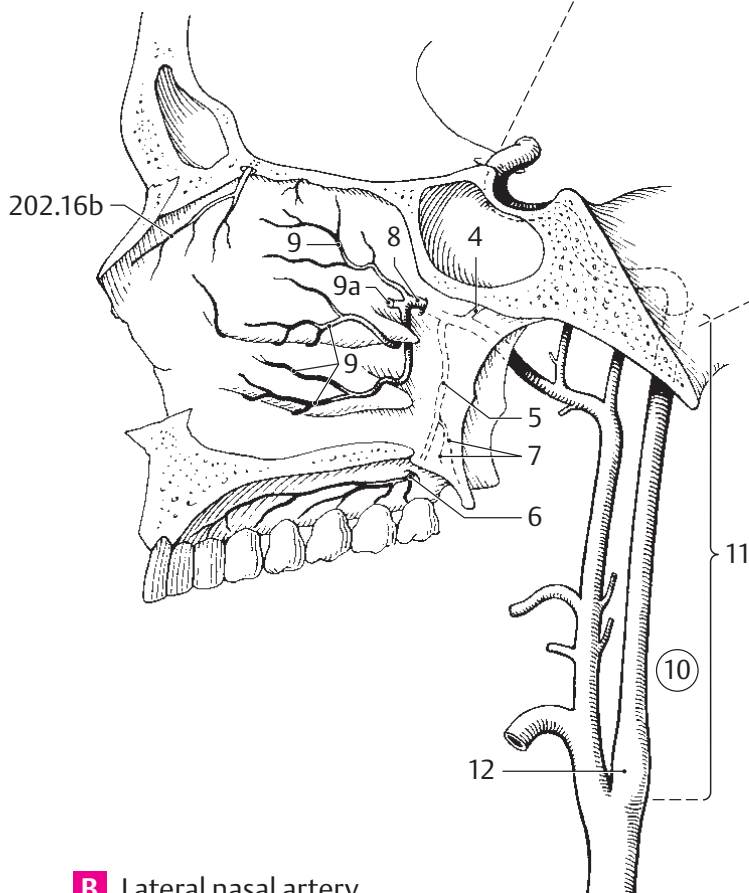
C Middle meningeal artery



A Infraorbital artery

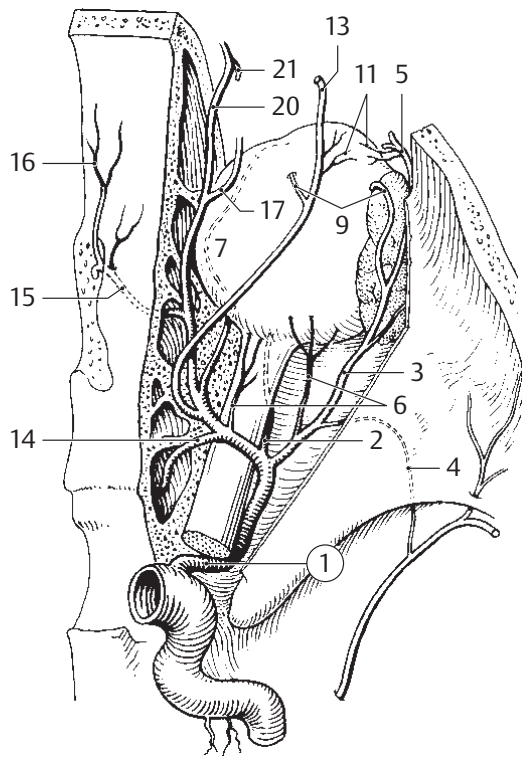


C Branches of internal carotid artery

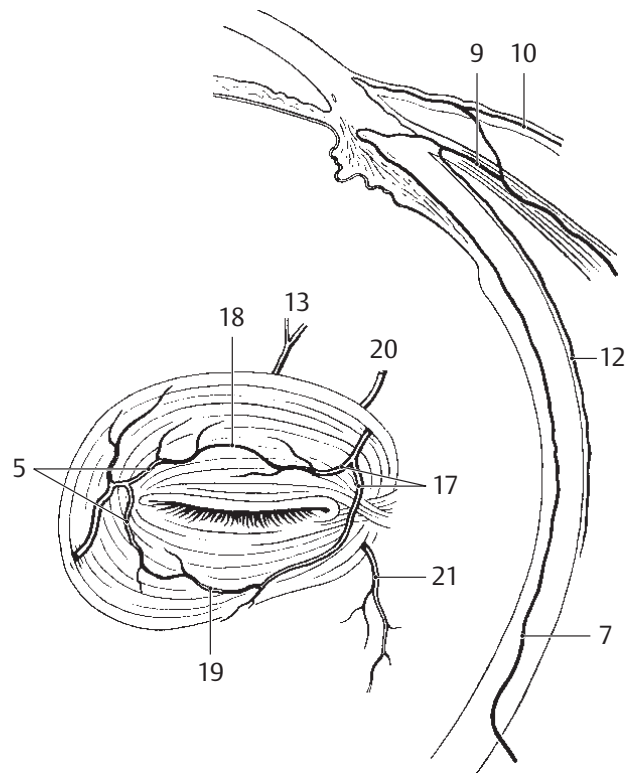


B Lateral nasal artery

11

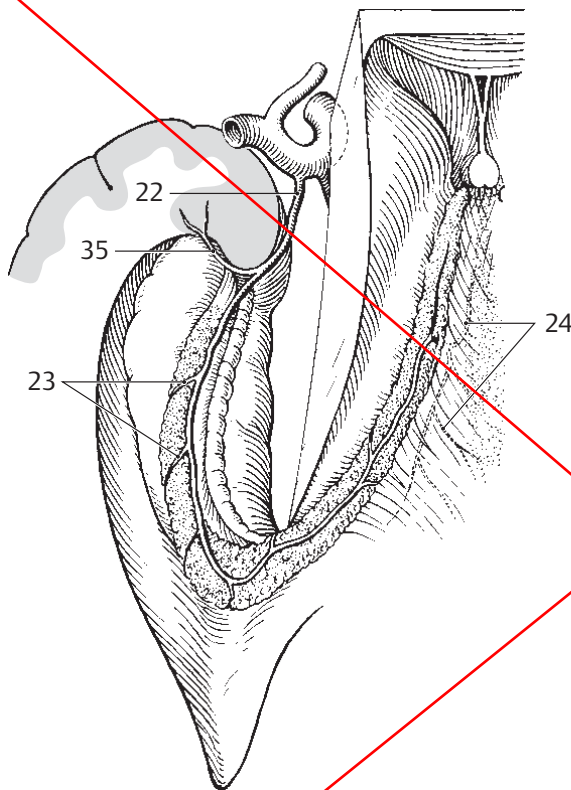


A Ophthalmic artery

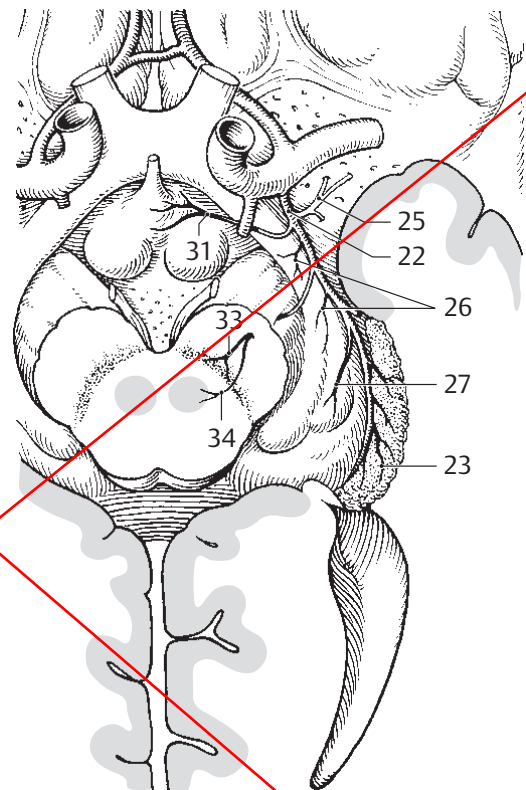


B Facial branches of ophthalmic artery

11



C Anterior choroidal artery from above



D Anterior choroidal artery from below

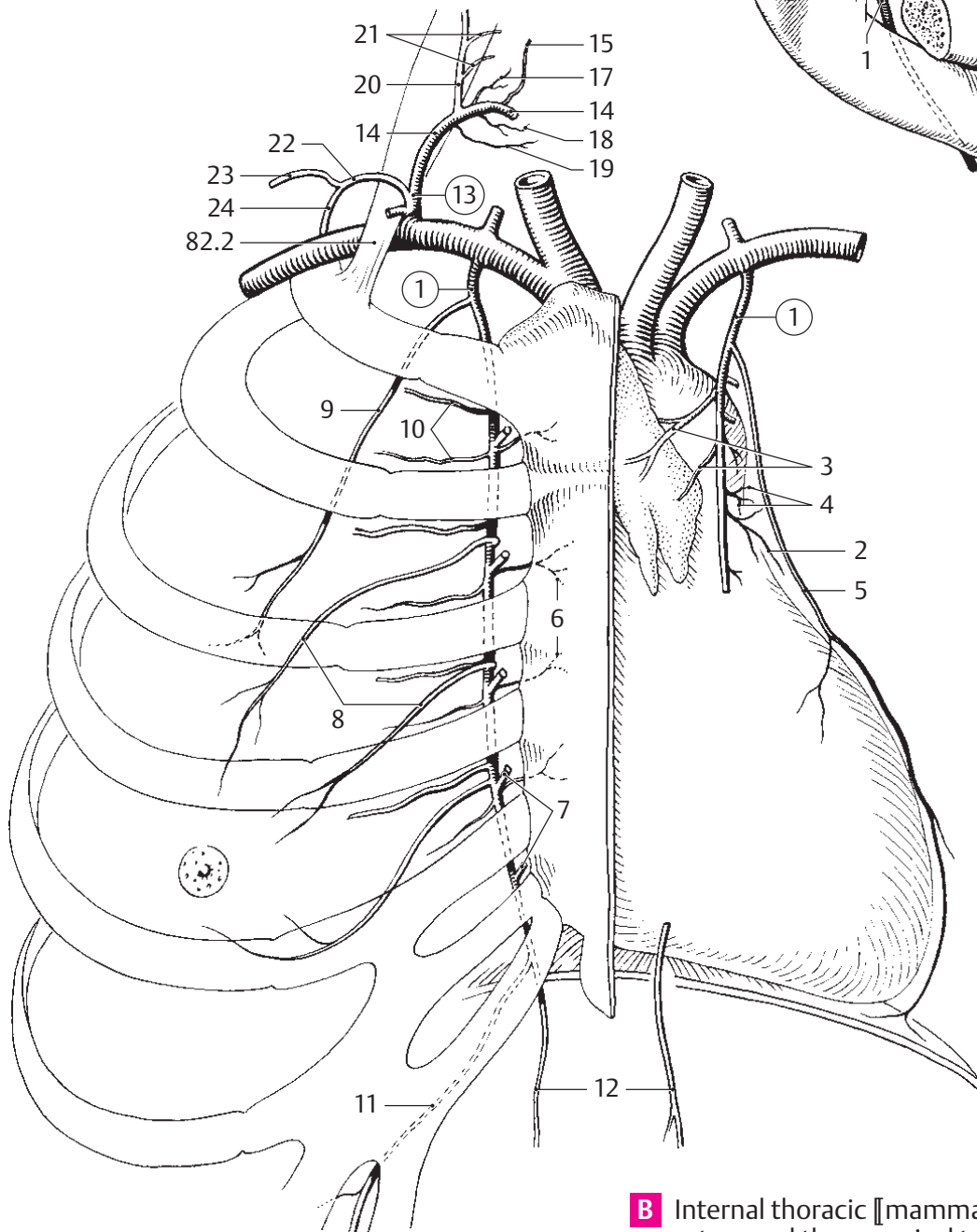
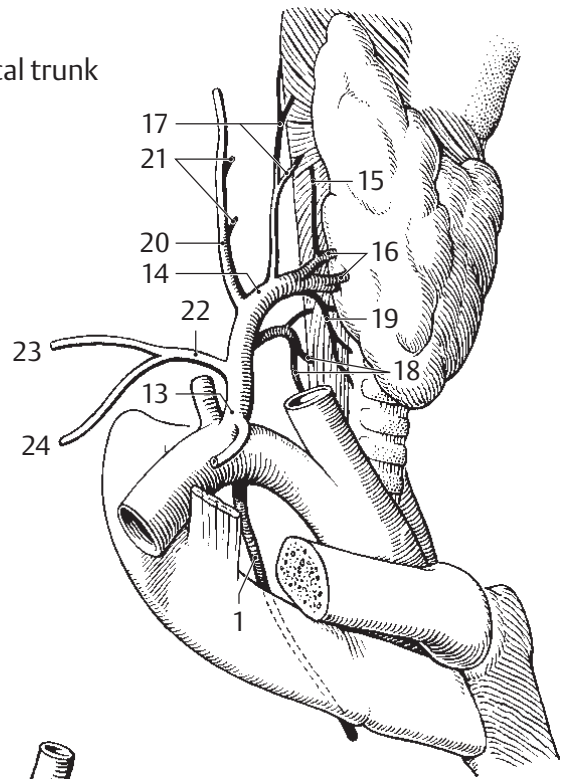
32 **Branches to hypothalamic nuclei.** Rami nucleorum hypothalamicorum. AChA branches that supply the hypothalamic nuclei.

33 **Branches to substantia nigra.** Rami substantiae nigrae. AChA branches that pass through the crus cerebri and supply the substantia nigra. D

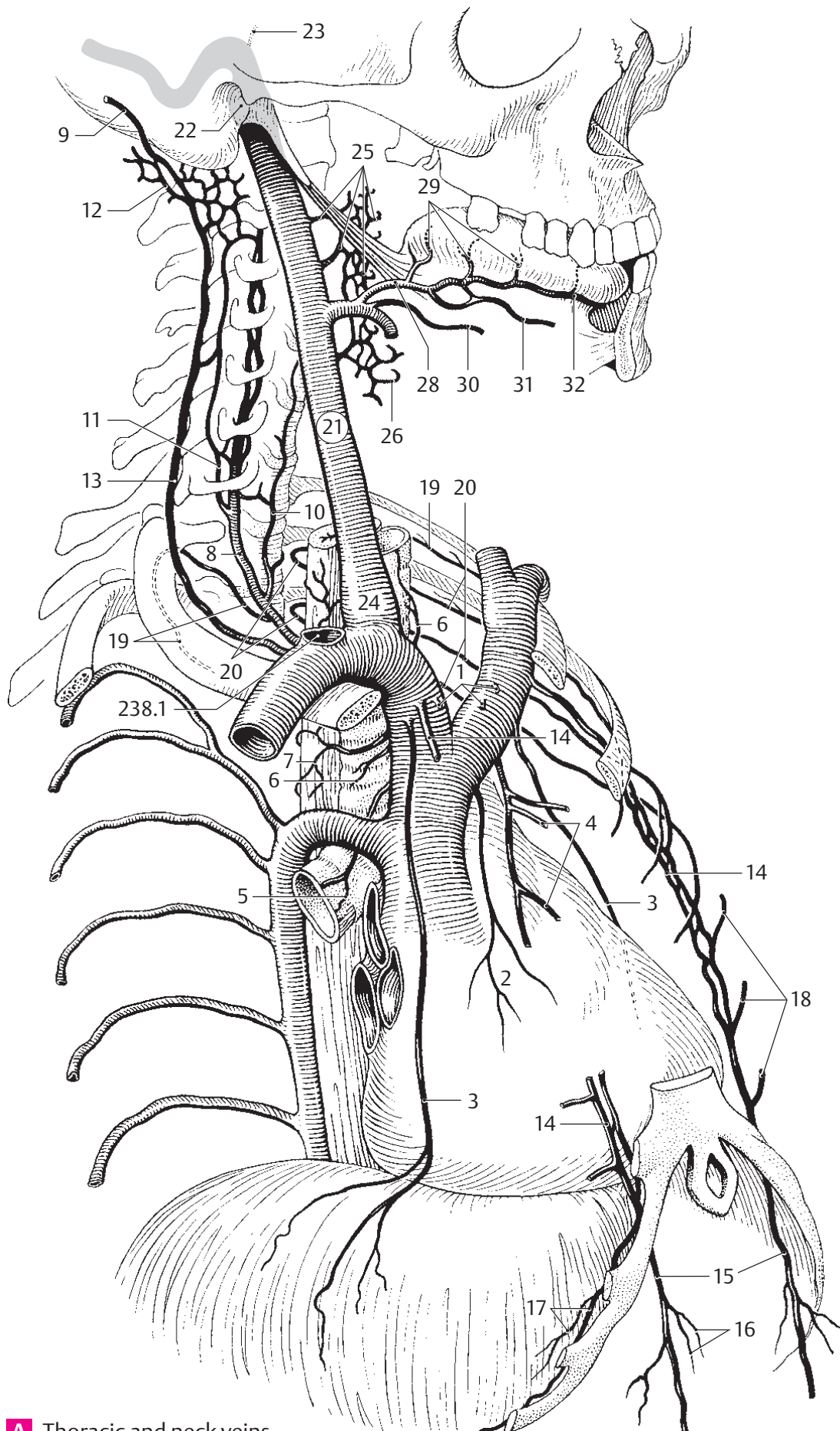
34 **Branches to red nucleus.** Rami nuclei rubri. AChA branches that pass through the crus cerebri and supply the red nucleus. D

35 **Branches to amygdaloid body.** Rami corporis amygdaloidei. Branches of the AChA that supply the medial amygdaloid nucleus. C

A Thyrocervical trunk



B Internal thoracic [[mammary]] artery and thyrocervical trunk



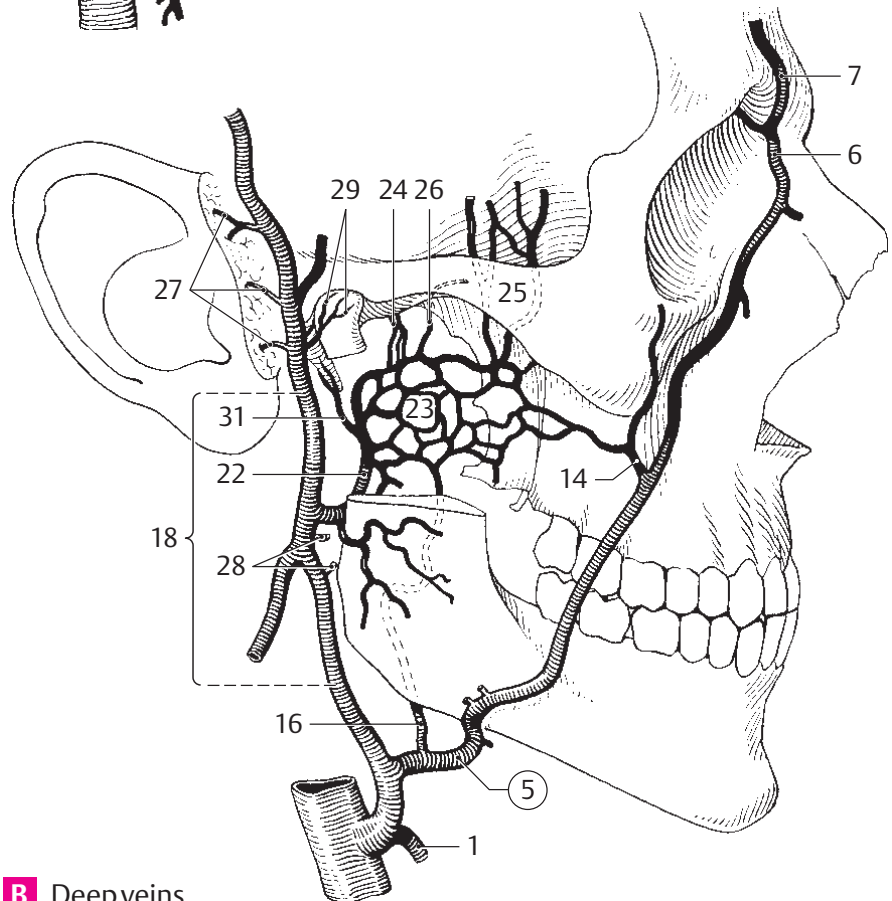
12

A Thoracic and neck veins

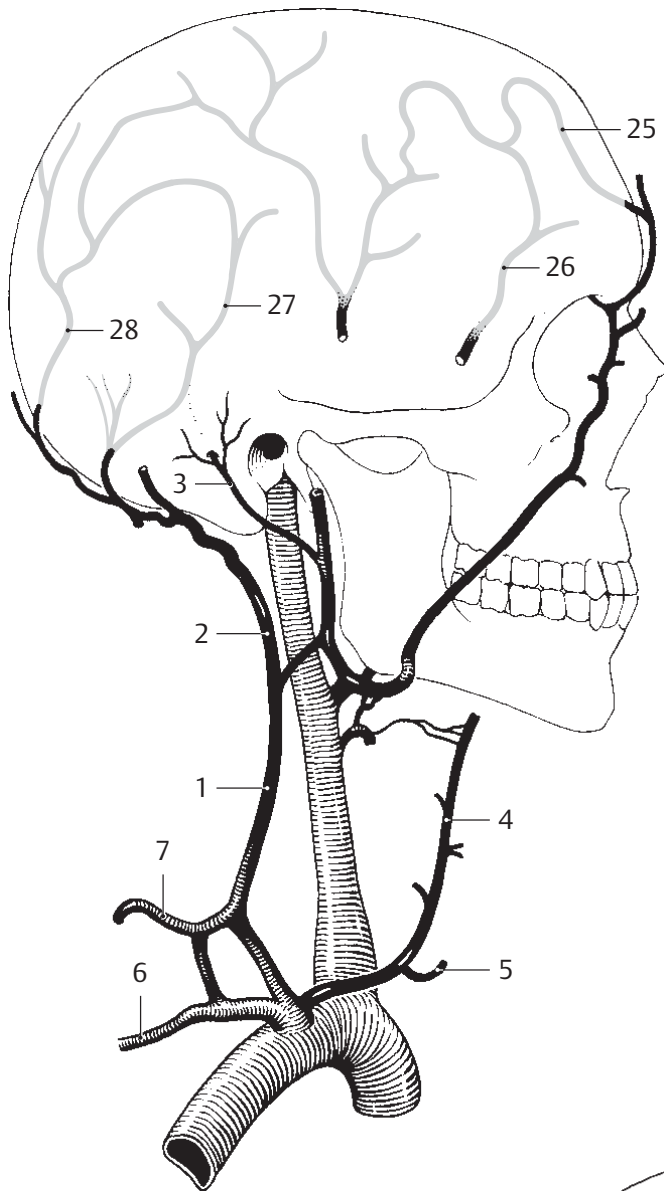


A Superficial veins of the head

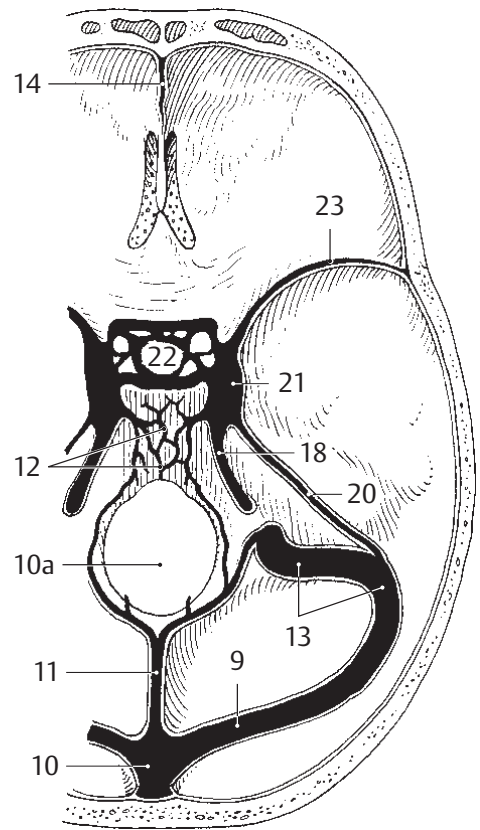
12



B Deep veins of the head

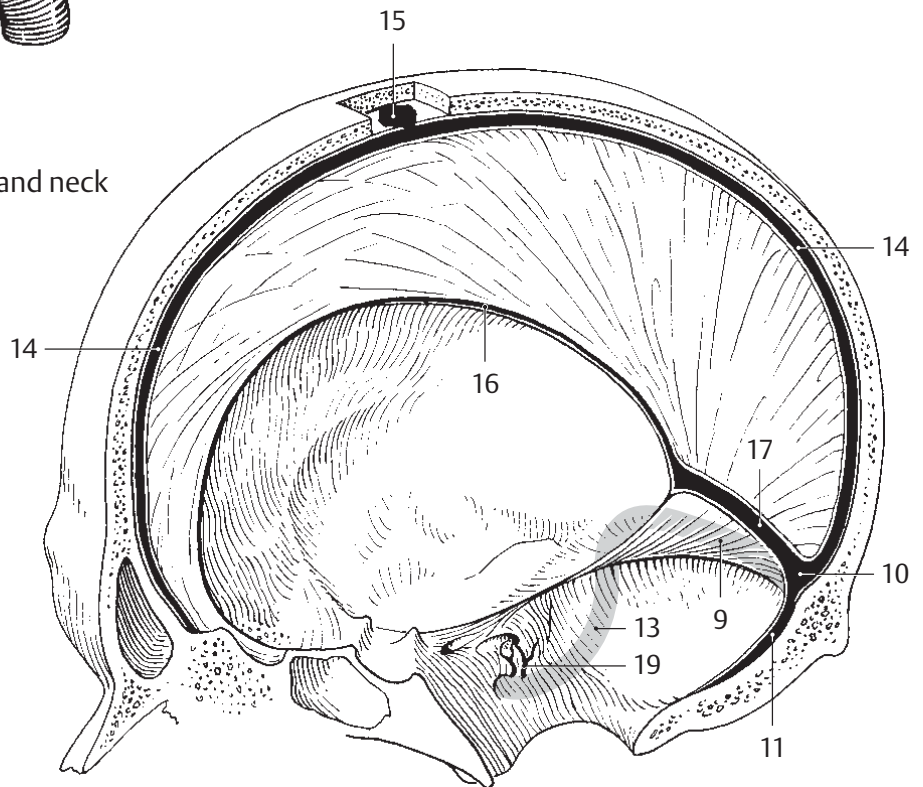


A Veins of the head and neck

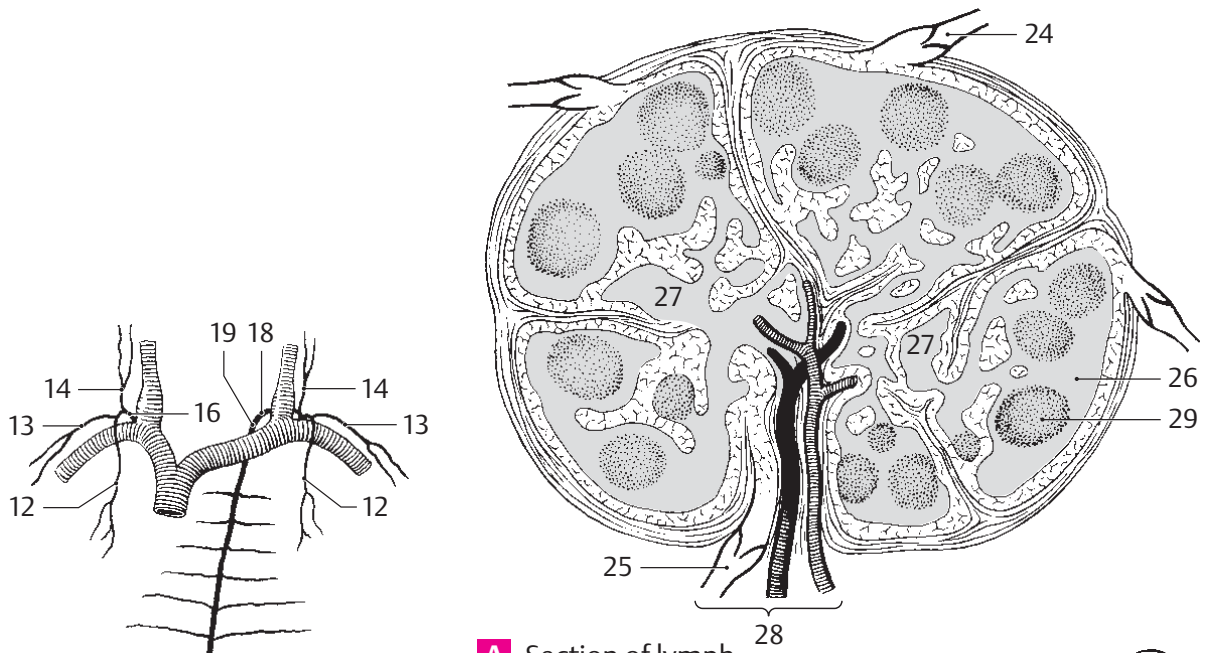


B Sinuses on the inner skull base

12



C Sinuses of right half of skull

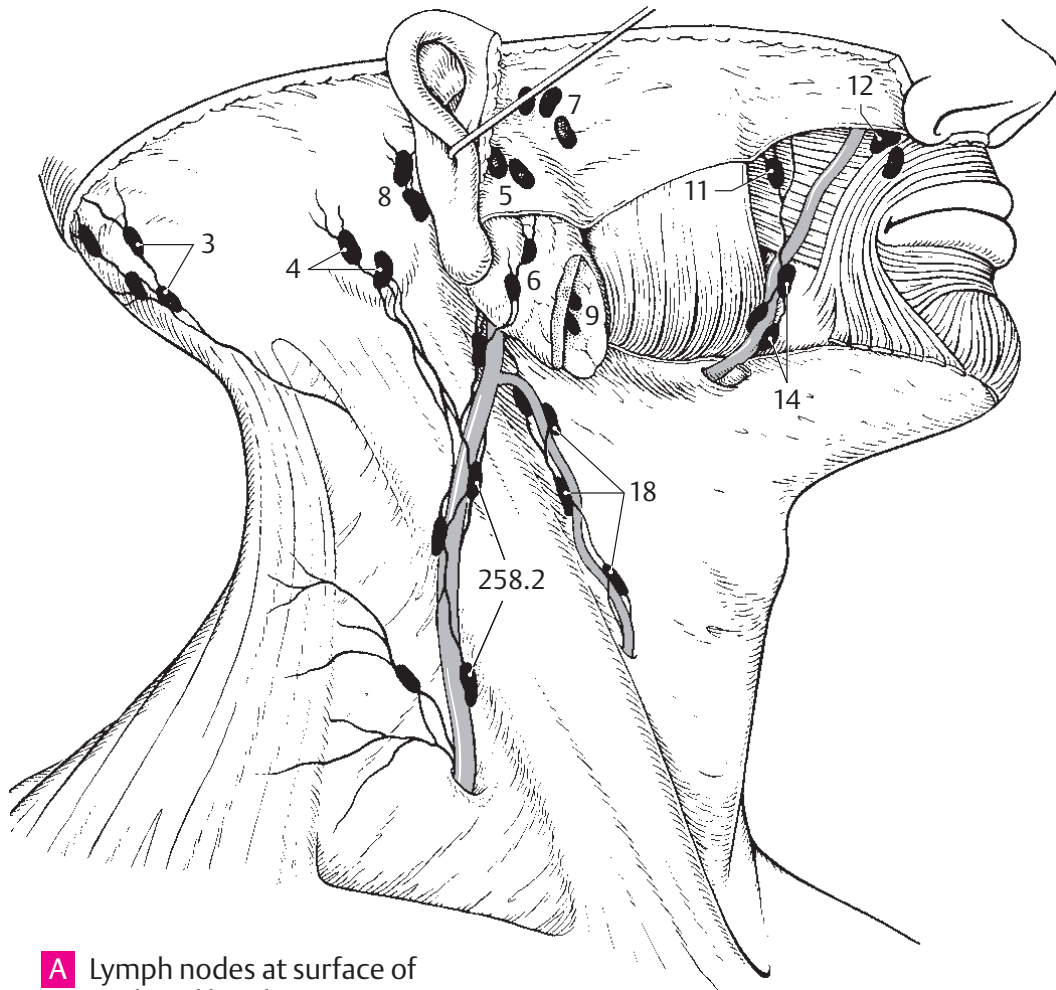


A Section of lymph node

B Lymphatic vessels of the trunk

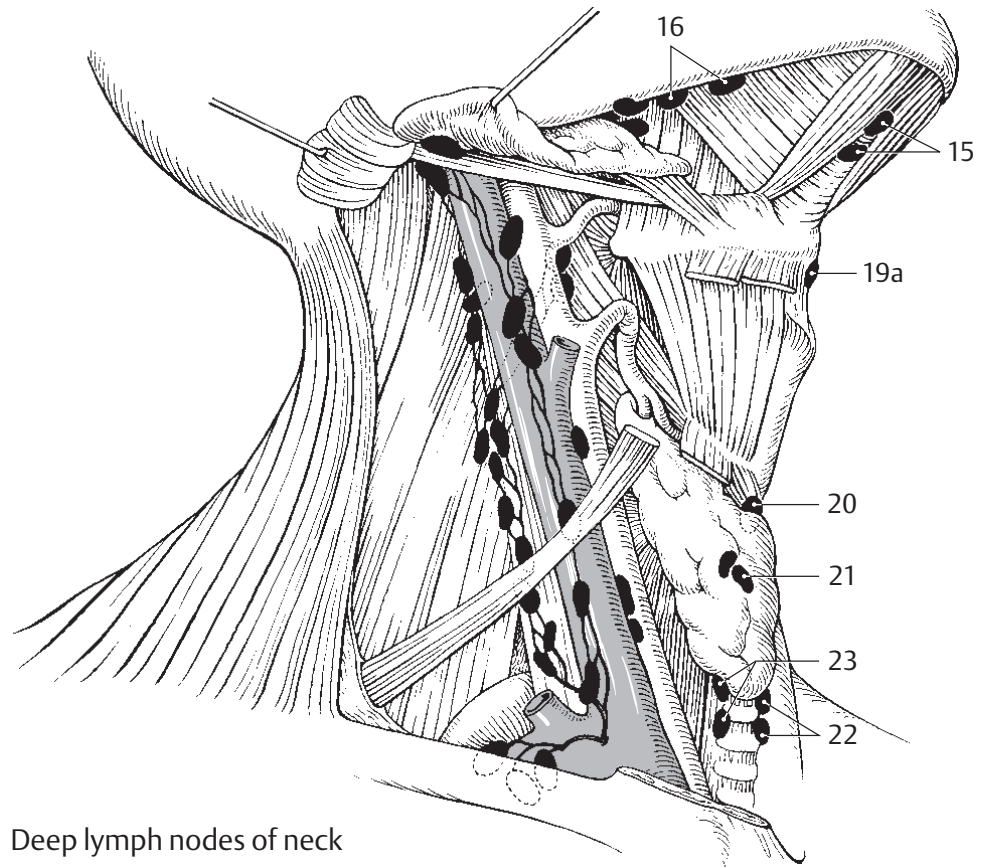
C Lymphatic vessels of small intestine

13

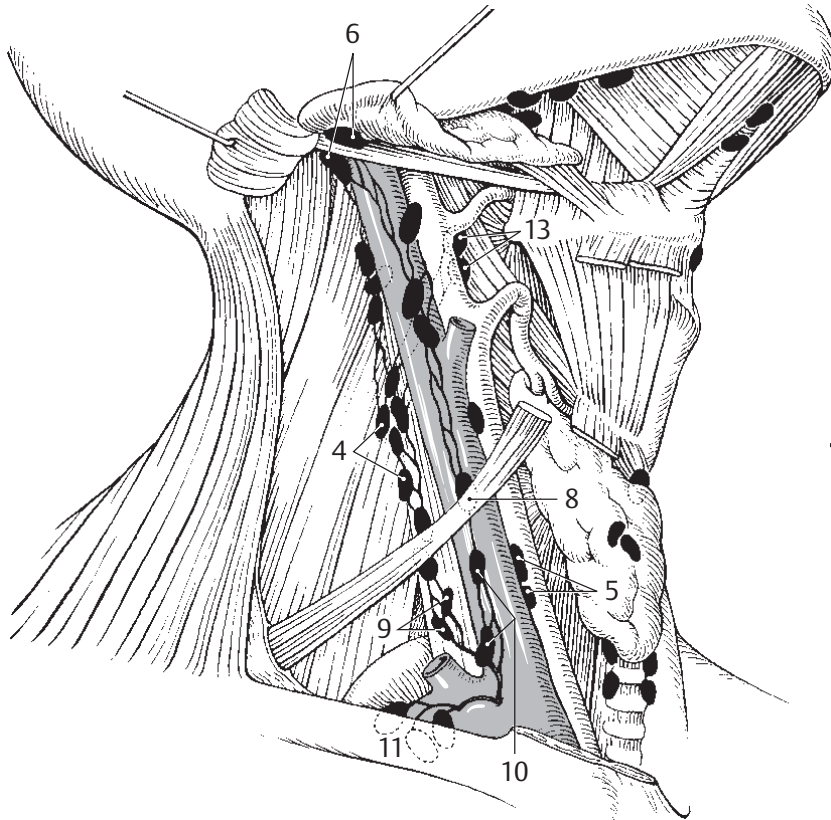


A Lymph nodes at surface of neck and head

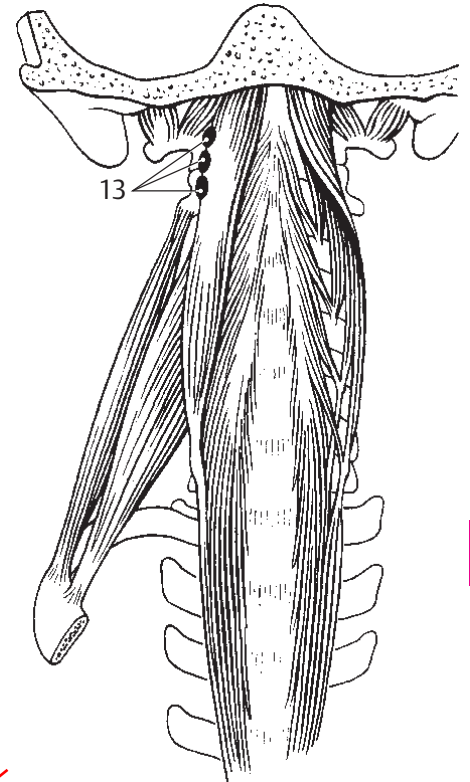
13



B Deep lymph nodes of neck

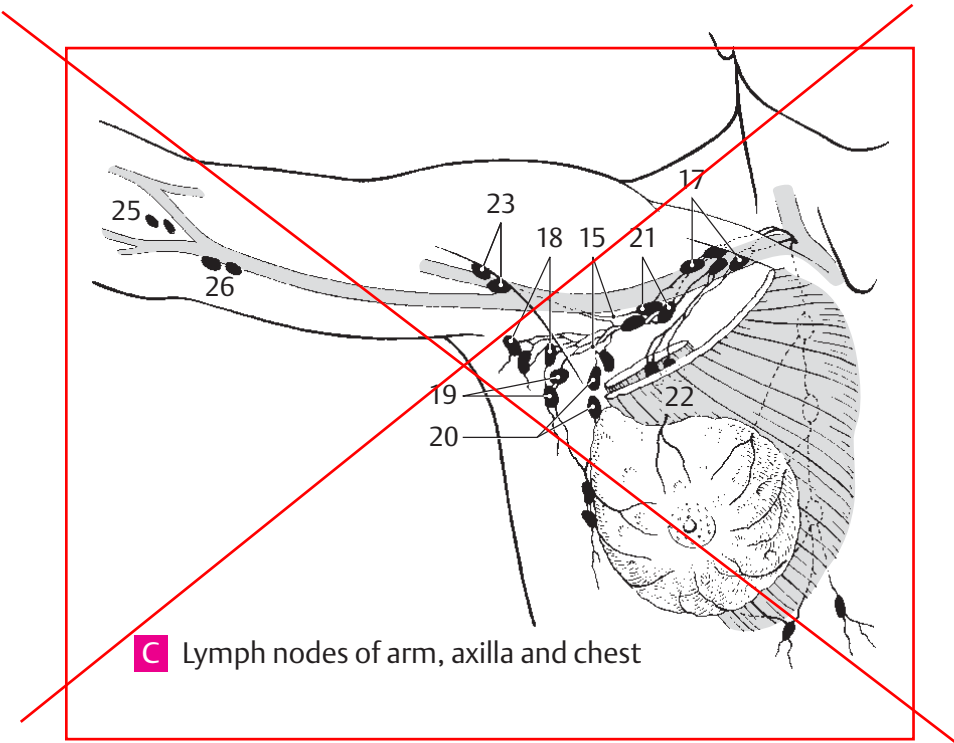


A Deep lymph nodes of neck



B Neck, anterior view

13



C Lymph nodes of arm, axilla and chest